

*Александр Ремисов*

*Г. Белянова*

# СОЛЬФЕДЖИО

## ИНТОНАЦИОННЫЕ УПРАЖНЕНИЯ ДЛЯ ВОКАЛИСТОВ

*для учащихся  
старших классов ДМШ, ДШИ,  
вокальных отделений  
музыкальных училищ и колледжей,  
студентов музыкальных вузов  
и консерваторий*



Издательство «Союз художников»  
Санкт-Петербург  
2012

Раздел V  
Внетональные распевки с удержанным тоном или ходом

1

2

3

4

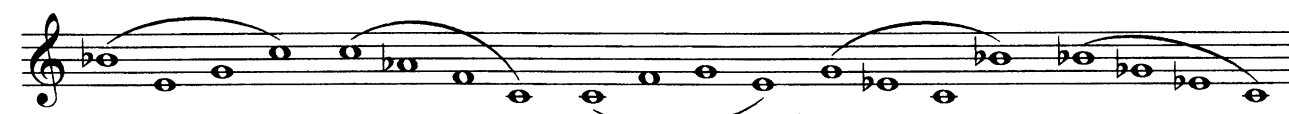
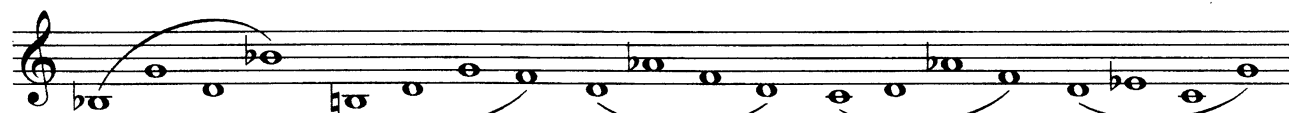
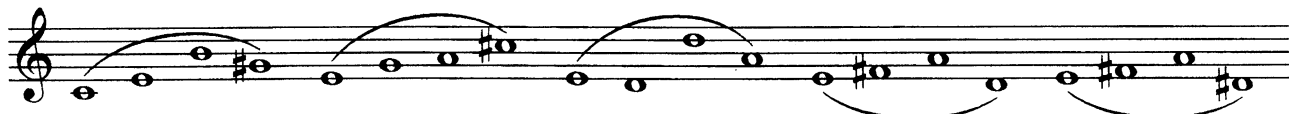
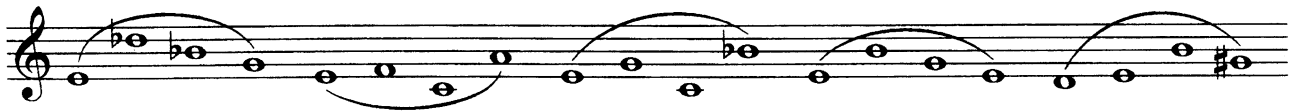
Exercise 4 consists of four measures of music on a single staff. The first measure begins with a treble clef, a key signature of one sharp (F#), and a 4/4 time signature. The melody is composed of quarter notes, with the first two measures each containing two phrases of two notes each, and the last two measures each containing one phrase of four notes. The notes are: M1: F#4, G4; M2: A4, B4; M3: C5, B4; M4: A4, G4. The notes are beamed together in pairs and each pair is covered by a slur.

5

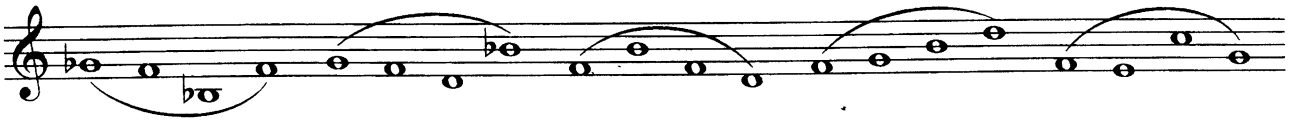
Exercise 5 consists of four measures of music on a single staff. The first measure begins with a treble clef, a key signature of one sharp (F#), and a 4/4 time signature. The melody is composed of quarter notes, with the first two measures each containing two phrases of two notes each, and the last two measures each containing one phrase of four notes. The notes are: M1: F#4, G4; M2: A4, B4; M3: C5, B4; M4: A4, G4. The notes are beamed together in pairs and each pair is covered by a slur.

6

Exercise 6 consists of four measures of music on a single staff. The first measure begins with a treble clef, a key signature of one sharp (F#), and a 4/4 time signature. The melody is composed of quarter notes, with the first two measures each containing two phrases of two notes each, and the last two measures each containing one phrase of four notes. The notes are: M1: F#4, G4; M2: A4, B4; M3: C5, B4; M4: A4, G4. The notes are beamed together in pairs and each pair is covered by a slur.

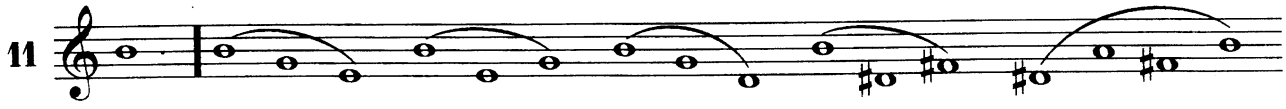


10  Musical staff 10, measure 1. Treble clef, key signature of one flat. Notes: G4, A4, Bb4, C5, Bb4, A4, G4. Slurs connect G4-A4-Bb4, A4-Bb4-C5, and Bb4-A4-G4.

 Musical staff 10, measure 2. Treble clef, key signature of one flat. Notes: F4, G4, A4, Bb4, C5, Bb4, A4, G4. Slurs connect F4-G4-A4, G4-A4-Bb4, and A4-Bb4-C5.

 Musical staff 10, measure 3. Treble clef, key signature of one flat. Notes: F4, G4, A4, Bb4, C5, Bb4, A4, G4. Slurs connect F4-G4-A4, G4-A4-Bb4, and A4-Bb4-C5.

 Musical staff 10, measure 4. Treble clef, key signature of one flat. Notes: F4, G4, A4, Bb4, C5, Bb4, A4, G4. Slurs connect F4-G4-A4, G4-A4-Bb4, and A4-Bb4-C5.

11  Musical staff 11, measure 1. Treble clef, key signature of one flat. Notes: G4, A4, Bb4, C5, Bb4, A4, G4. Slurs connect G4-A4-Bb4, A4-Bb4-C5, and Bb4-A4-G4.


 Musical staff 11, measure 2. Treble clef, key signature of one flat. Notes: F4, G4, A4, Bb4, C5, Bb4, A4, G4. Slurs connect F4-G4-A4, G4-A4-Bb4, and A4-Bb4-C5.

 Musical staff 11, measure 3. Treble clef, key signature of one flat. Notes: F4, G4, A4, Bb4, C5, Bb4, A4, G4. Slurs connect F4-G4-A4, G4-A4-Bb4, and A4-Bb4-C5.

 Musical staff 11, measure 4. Treble clef, key signature of one flat. Notes: F4, G4, A4, Bb4, C5, Bb4, A4, G4. Slurs connect F4-G4-A4, G4-A4-Bb4, and A4-Bb4-C5.

12  Musical staff 12, measure 1. Treble clef, key signature of one flat. Notes: G4, A4, Bb4, C5, Bb4, A4, G4. Slurs connect G4-A4-Bb4, A4-Bb4-C5, and Bb4-A4-G4.

 Musical staff 12, measure 2. Treble clef, key signature of one flat. Notes: F4, G4, A4, Bb4, C5, Bb4, A4, G4. Slurs connect F4-G4-A4, G4-A4-Bb4, and A4-Bb4-C5.

 Musical staff 12, measure 3. Treble clef, key signature of one flat. Notes: F4, G4, A4, Bb4, C5, Bb4, A4, G4. Slurs connect F4-G4-A4, G4-A4-Bb4, and A4-Bb4-C5.

 Musical staff 12, measure 4. Treble clef, key signature of one flat. Notes: F4, G4, A4, Bb4, C5, Bb4, A4, G4. Slurs connect F4-G4-A4, G4-A4-Bb4, and A4-Bb4-C5.

13

System 13 consists of three staves of music. The first staff begins with a treble clef and a key signature of one flat (B-flat). It contains three measures of music, each starting with a half note followed by a quarter note, all under a single slur. The notes are: G4, A4, B-flat4, C5, B-flat4, A4, G4. The second staff continues with three measures of music, each starting with a half note followed by a quarter note, all under a single slur. The notes are: G4, A4, B-flat4, C5, B-flat4, A4, G4. The third staff continues with three measures of music, each starting with a half note followed by a quarter note, all under a single slur. The notes are: G4, A4, B-flat4, C5, B-flat4, A4, G4.

14

System 14 consists of three staves of music. The first staff begins with a treble clef and a key signature of one flat (B-flat). It contains three measures of music, each starting with a half note followed by a quarter note, all under a single slur. The notes are: G4, A4, B-flat4, C5, B-flat4, A4, G4. The second staff continues with three measures of music, each starting with a half note followed by a quarter note, all under a single slur. The notes are: G4, A4, B-flat4, C5, B-flat4, A4, G4. The third staff continues with three measures of music, each starting with a half note followed by a quarter note, all under a single slur. The notes are: G4, A4, B-flat4, C5, B-flat4, A4, G4.

15

System 15 consists of three staves of music. The first staff begins with a treble clef and a key signature of one flat (B-flat). It contains three measures of music, each starting with a half note followed by a quarter note, all under a single slur. The notes are: G4, A4, B-flat4, C5, B-flat4, A4, G4. The second staff continues with three measures of music, each starting with a half note followed by a quarter note, all under a single slur. The notes are: G4, A4, B-flat4, C5, B-flat4, A4, G4. The third staff continues with three measures of music, each starting with a half note followed by a quarter note, all under a single slur. The notes are: G4, A4, B-flat4, C5, B-flat4, A4, G4.

16

System 16 consists of three staves of music. The first staff begins with a treble clef and a key signature of one flat (B-flat). It contains three measures of music, each starting with a half note followed by a quarter note, all under a single slur. The notes are: G4, A4, B-flat4, C5, B-flat4, A4, G4. The second staff continues with three measures of music, each starting with a half note followed by a quarter note, all under a single slur. The notes are: G4, A4, B-flat4, C5, B-flat4, A4, G4. The third staff continues with three measures of music, each starting with a half note followed by a quarter note, all under a single slur. The notes are: G4, A4, B-flat4, C5, B-flat4, A4, G4.

17

18

19

ЭНГ.

20

21

22

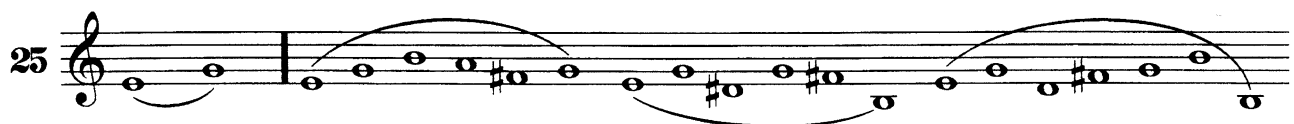
23

ЭНГ.

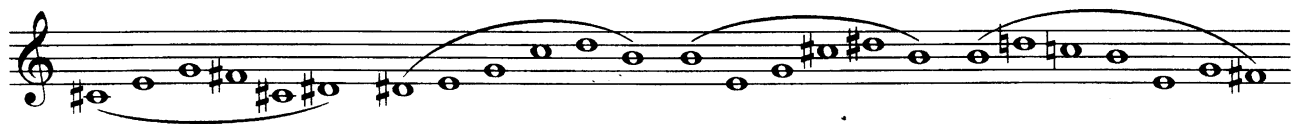
24



25



Musical staff 1 of system 25, featuring a treble clef, a key signature of one sharp (F#), and a melody of quarter notes with slurs and ties.



Musical staff 2 of system 25, continuing the melody with slurs and ties.



Musical staff 3 of system 25, concluding the system with a double bar line.

26



Musical staff 1 of system 26, featuring a treble clef, a key signature of one sharp (F#), and a melody of quarter notes with slurs and ties.

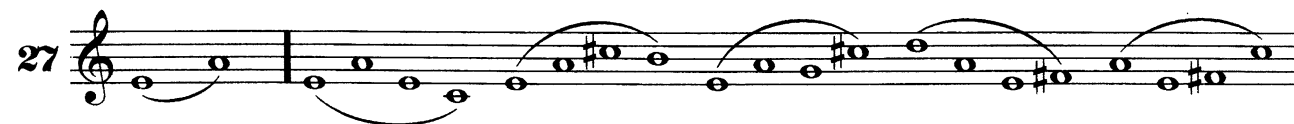


Musical staff 2 of system 26, continuing the melody with slurs and ties.

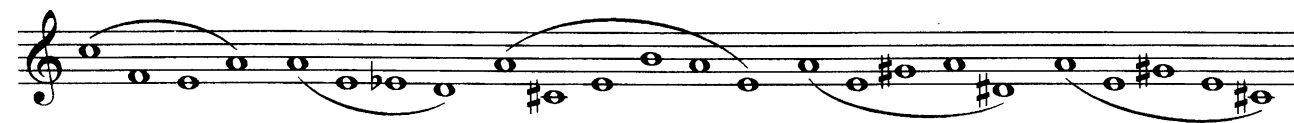


Musical staff 3 of system 26, concluding the system with a double bar line.

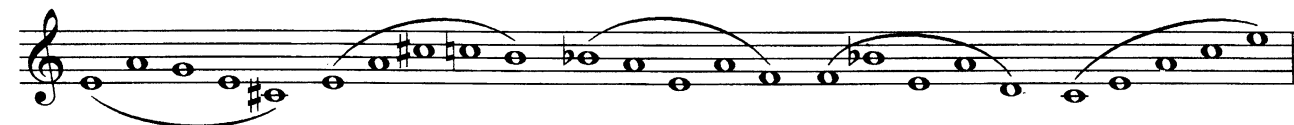
27



Musical staff 1 of system 27, featuring a treble clef, a key signature of one sharp (F#), and a melody of quarter notes with slurs and ties.



Musical staff 2 of system 27, continuing the melody with slurs and ties.



Musical staff 3 of system 27, concluding the system with a double bar line.

28



Musical staff 1 of system 28, featuring a treble clef, a key signature of one sharp (F#), and a melody of quarter notes with slurs and ties.



Musical staff 2 of system 28, continuing the melody with slurs and ties.



Musical staff 3 of system 28, concluding the system with a double bar line.